

Set Back Corners



Back wall



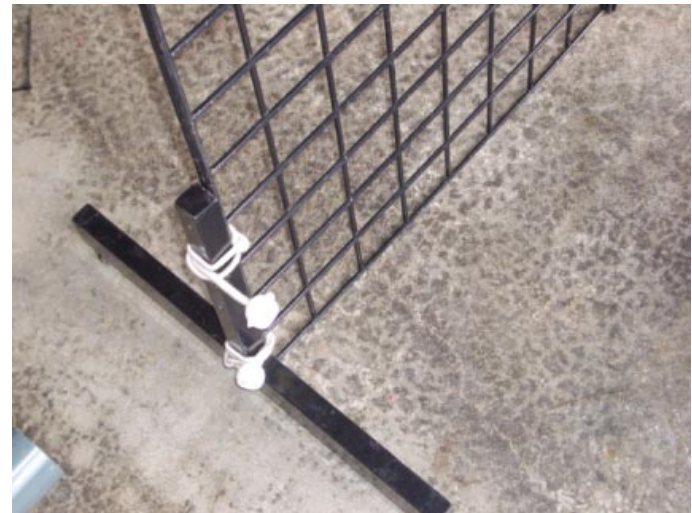
Use Tent poles to correct wall wobble.



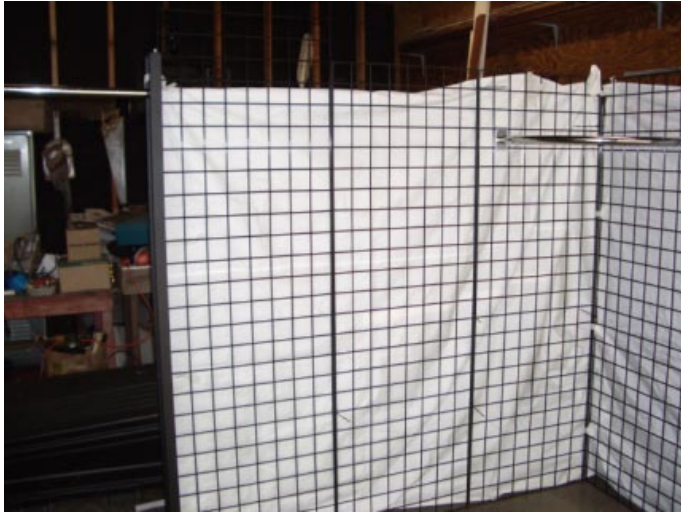
Use Tent Corner Joint for second pole for other wall.



This is the Right Wall. It is a straight wall with a 7 foot grid at the end.



At the end of this Right Wall, use a foot to stabilize the straight wall.



This is the Left Wall



This is the Left Wall again with some Chrome hardware on it. Note the straight Chrome bar in the left corner



Close up of the Chrome bar that fits the blank grid space.





End of Left Wall showing grids in a right angle arrangement at Front of Booth. This corner uses 2 7 foot grids.